

MONTHLY MEMBERSHIP PROGRESS REPORT

LOCATION AUSTRALIA

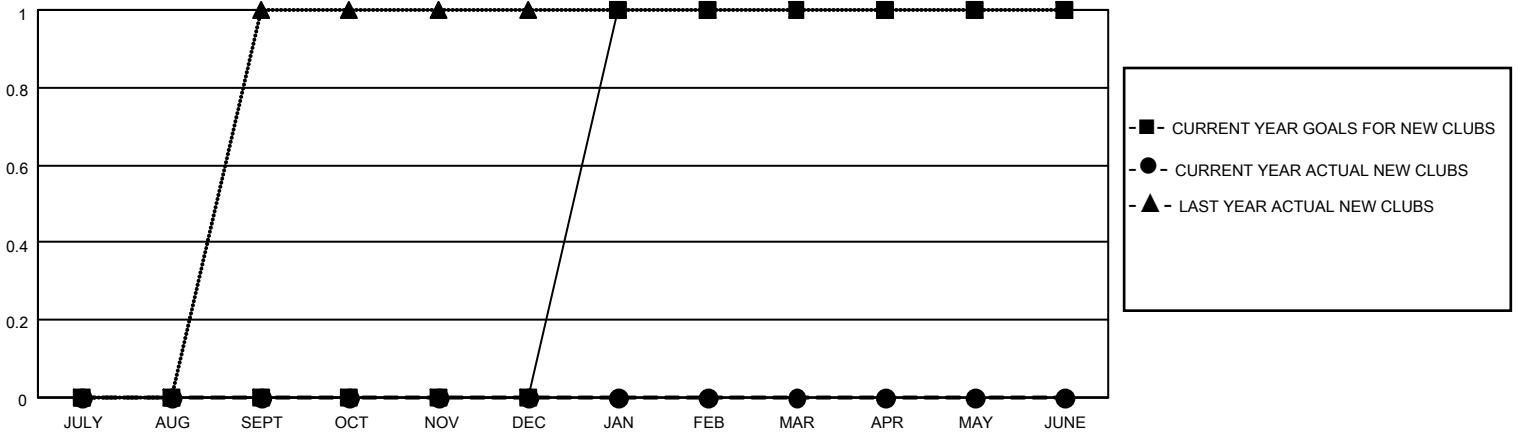
District 201V14

Results as of: 12/31/2020

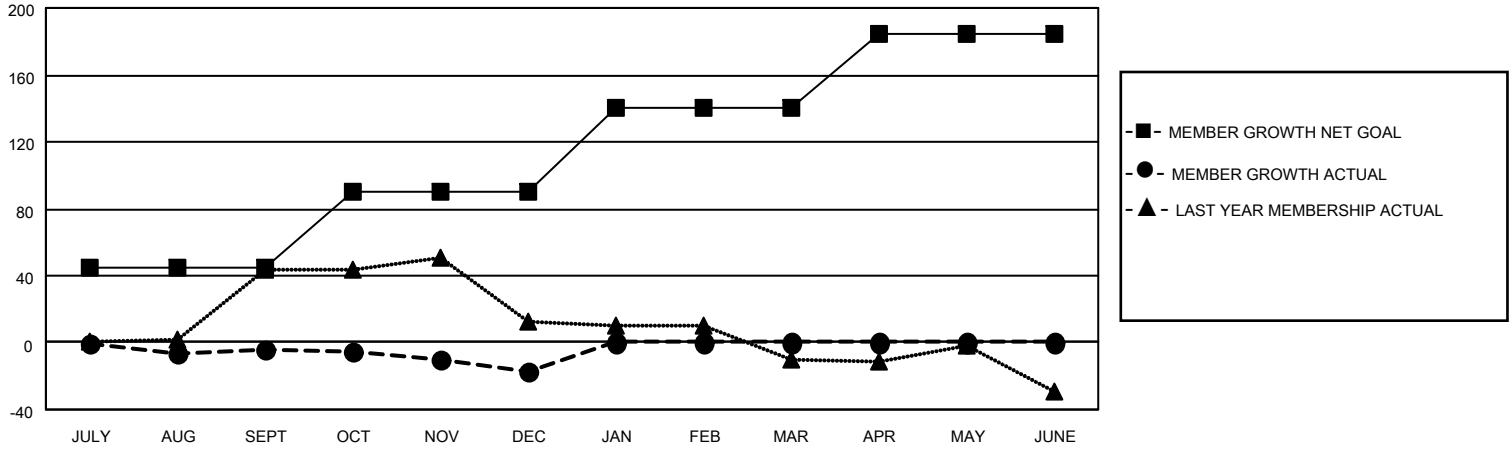
Clubs			
RESULTS FOR 2020-2021			
QUARTER	NEW CLUB GOAL	NEW CLUBS	DROPPED CLUBS
JULY/AUG/SEPT	0	0	1
OCT/NOV/DEC	0	0	0
JAN/FEB/MAR	1	0	0
APR/MAY/JUNE	0	0	0

Members			
RESULTS FOR 2020-2021			
QUARTER	MEMBER GROWTH NET GOAL	MEMBER GROWTH ACTUAL	DROPPED MEMBERS ACTUAL (including transfers)
JULY/AUG/SEPT	45	19	19
OCT/NOV/DEC	45	16	26
JAN/FEB/MAR	50	0	0
APR/MAY/JUNE	45	0	0

GOALS AND ACTUAL NEW CLUBS CUMULATIVE



GOALS AND ACTUAL MEMBERS CUMULATIVE



DROPPED CLUBS: 1

21 CLUBS OF 74 ADDED 1 OR MORE NEW MEMBERS

GENDER DISTRIBUTION

MALE 883 (69.97%)
FEMALE 379 (30.03%)

DROPPED MEMBERS

[CLICK HERE FOR CUMULATIVE MEMBERSHIP DATA](#)

DECEASED	6
CLUB CANCELLED	0
OTHER	39
TOTAL	45

TOTAL FAMILY UNIT MEMBERS	138
FAMILY MEMBERS PAYING HALF DUES	70